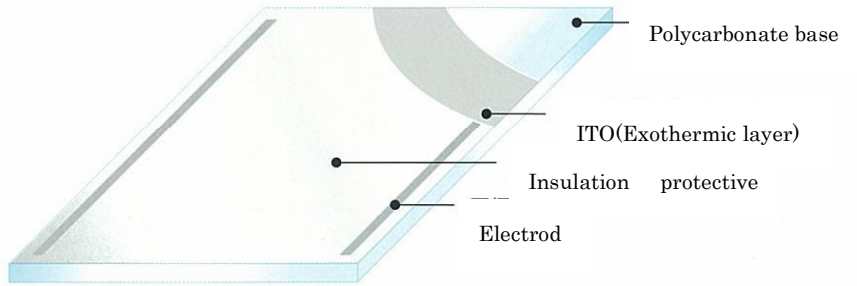


CLEARHEAT®

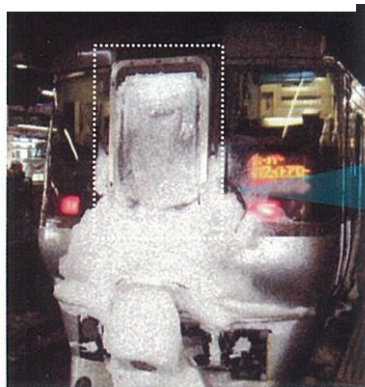
(Exothermal polycarbonate plate)

CLEARHEAT®, by demand, has been developed with more powerful abilities of exothermal properties and dew condensation prevention for the polycarbonate resin window which has been experienced as anti-window breaking measure in the railway vehicle.



1. Melting snow effect and the prevention of dew condensation: the thawing ability is verified under -30 degrees C(Celsius) circumstances.
2. High Quality of Transparency: Parallel ray transmittance Over 80% (550W/m²)
3. Ability of Temperature Control Exothermic Performance $\Delta 40^{\circ}\text{C} \sim \Delta 60^{\circ}\text{C}$
Electricity consumption is customizable as customer's request.
4. The exothermal function was proved it still worked under the falling weight test (weight 500g x height 5m).80% (550W/m²)

Before the installation of CLEARHEAT®



After the installation of CLEARHEAT® (Window Magnified)



©Process of Melting Snow (Snow at the exothermal window surface is thawed when running.)

